



LCR – Least Cost Routing
IP Module

1. Introduction

The LCR (Least Cost Routing) module is a fax routing mechanism which routes the faxes to a gateway from which the transmission to the destination fax will be cheapest. The LCR module is installed on every fax server in the network in order to offer as large a variety of distribution points and rates as possible. If, for example, a network as such includes two fax gateways: a local server (country A) and a remote one (country B). In this case, an ordinary fax sent from country A to country B will be considerably more expensive than transmitting the fax from the local sever (country A) to the distant server (country B) via TCP/IP, and out to the receiving machine as an ordinary, drastically cheaper, local call.

2. Installation Instructions

The following files must be copied onto the local fax server and placed under the path c:\program files\faxport inc\server:


- FXPLCJB.dll
- LCR.exe

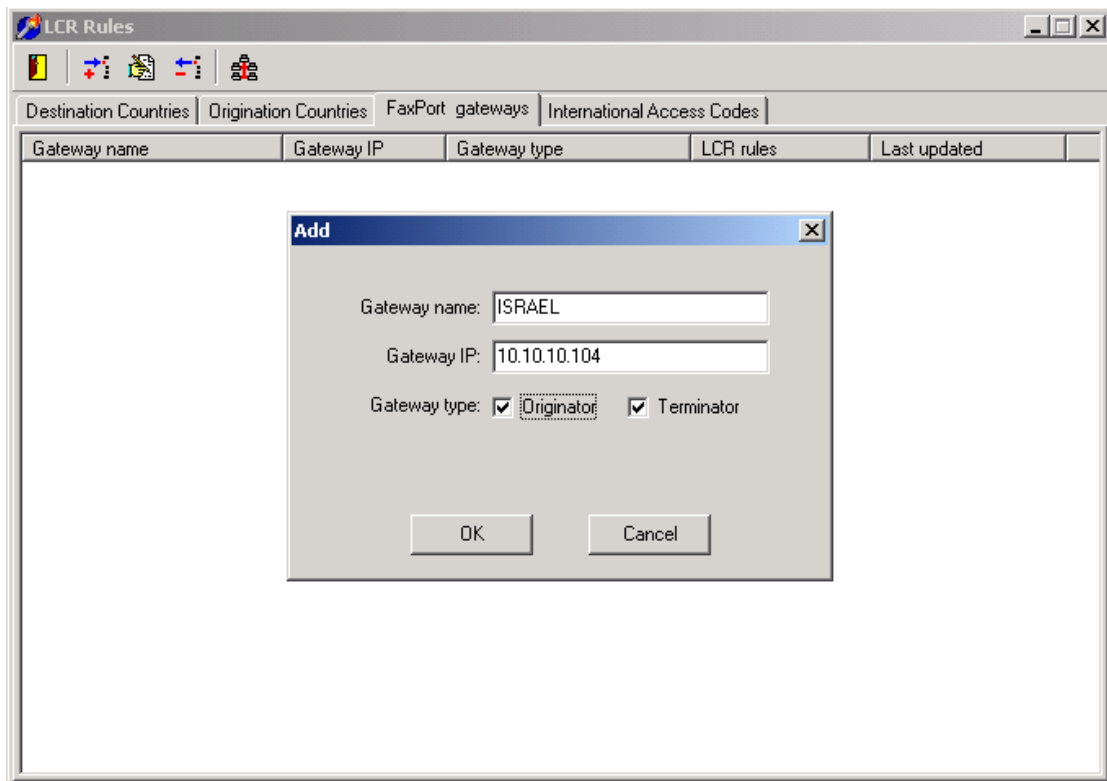
Onto the distant fax server, the Fxplcjb.dll must be copied and placed under the following path: c:\program files\faxport inc\server

3. Configuration

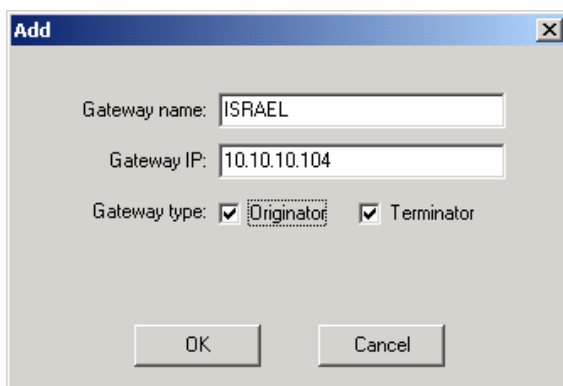
3.1 Configure Gateway

- Verify both fax servers are up and running.
- Execute the LCR.exe from the sever directory, c:\program files\faxport inc\server.
- Enter the 'Fax Gateway' tab (third tab from the left).

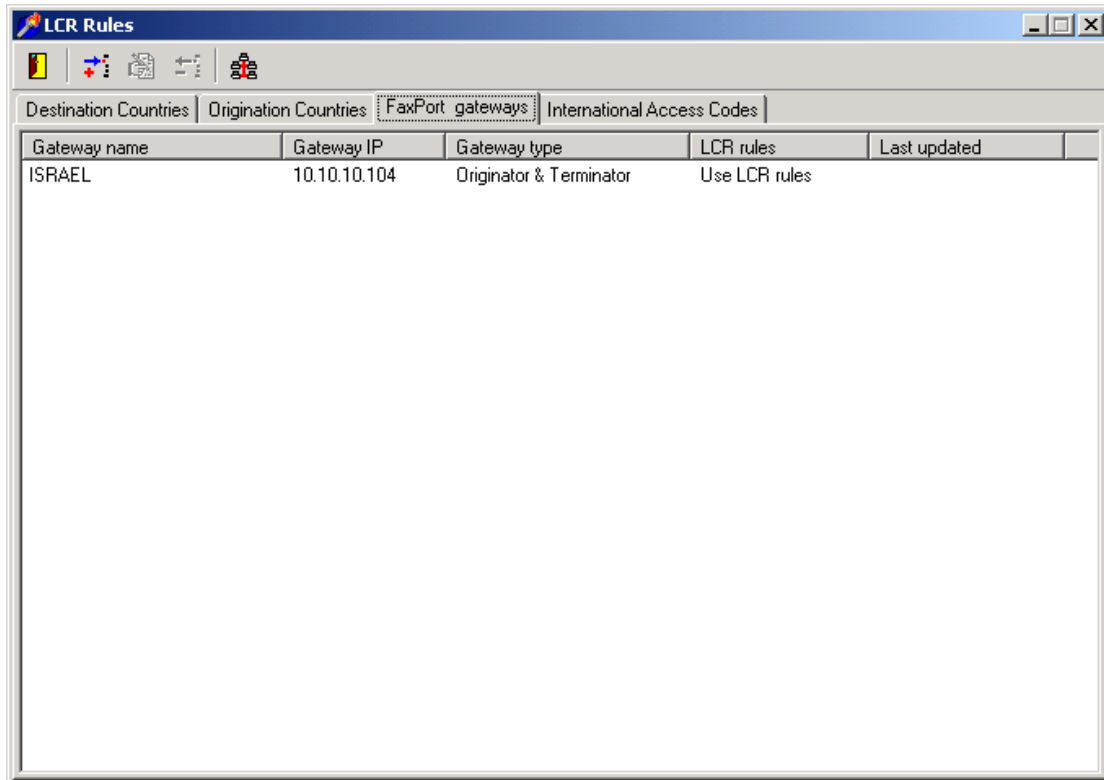
- Click on the 'Add' button  to add gateways to the 'Gateway Table'.
- A window will appear in which the gateway name, IP, and type can be entered.



- Define gateway parameters (name, IP and type – Originator and/or Terminator, according to the location and function of said gateway in the network).

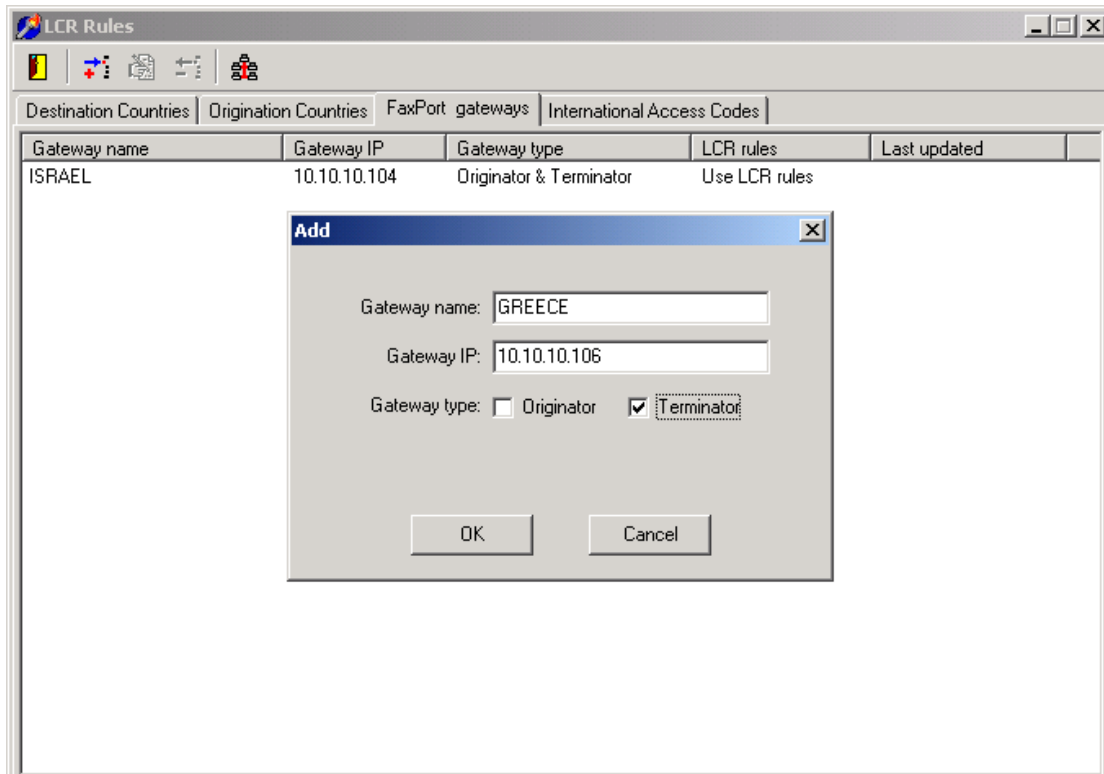


- Gateway will be added to the 'Gateway Table'.

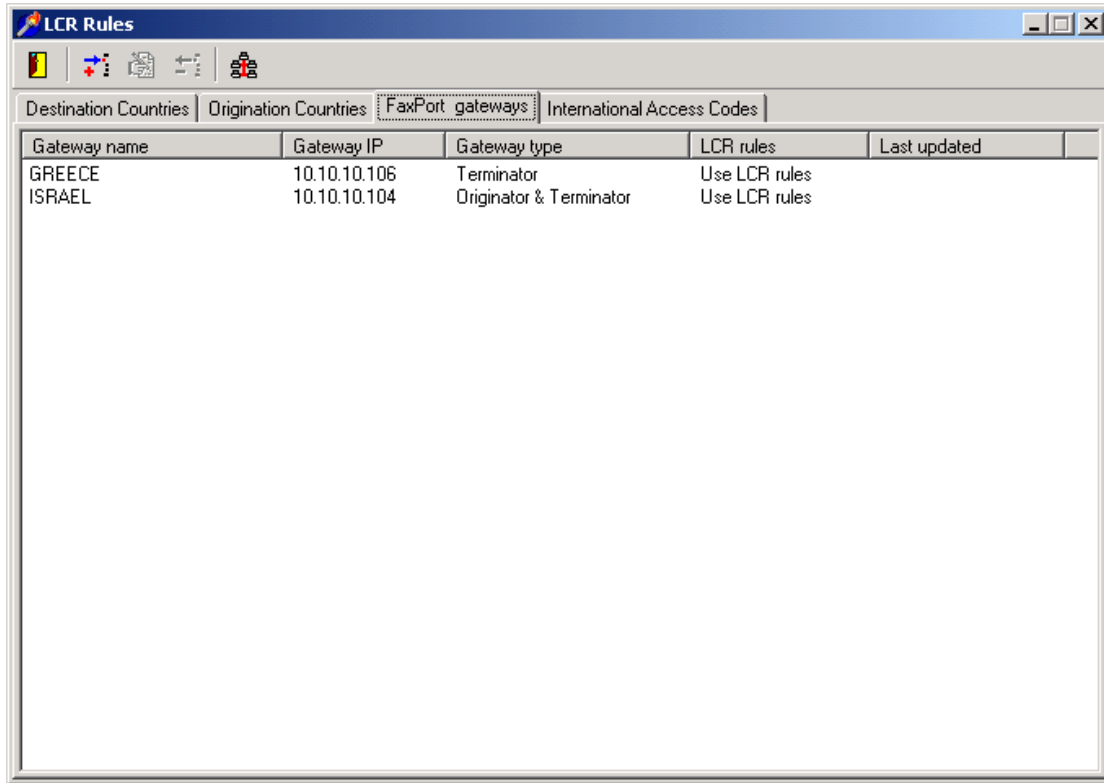


- Go on and enter all other gateways in the same manner.

Note: the delete button -  , the edit button - .




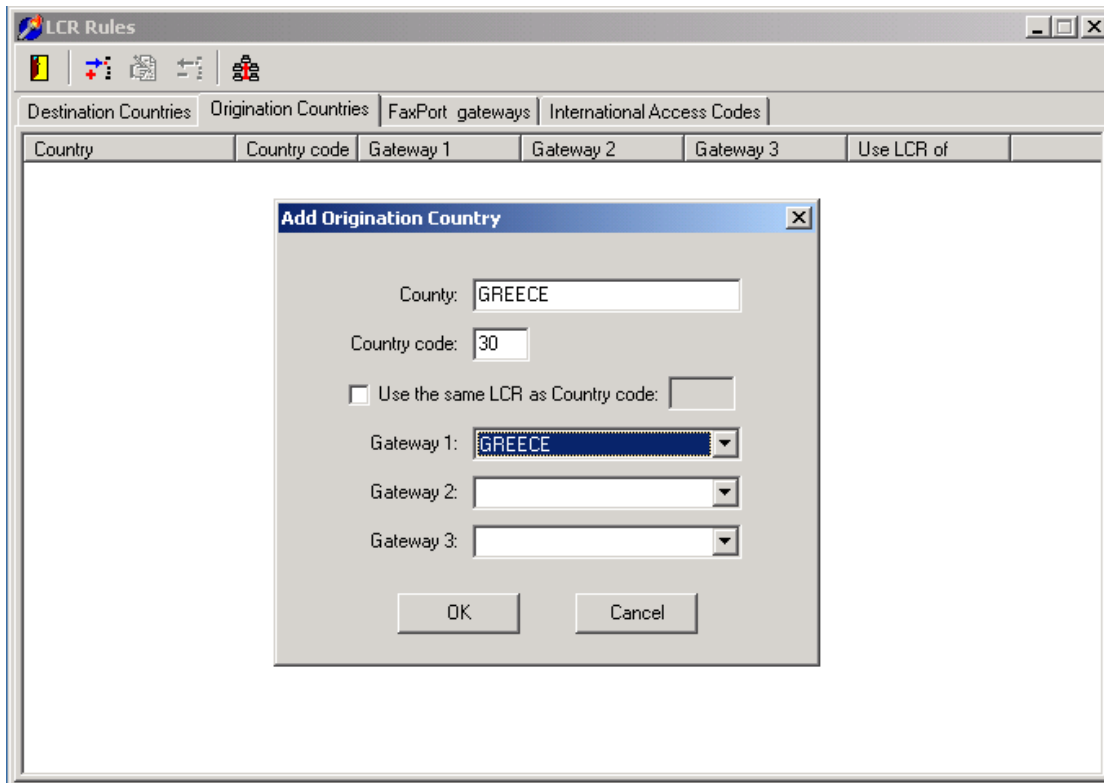
- Once all gateways have been entered and configured, 'Gateway Table' should appear as such:



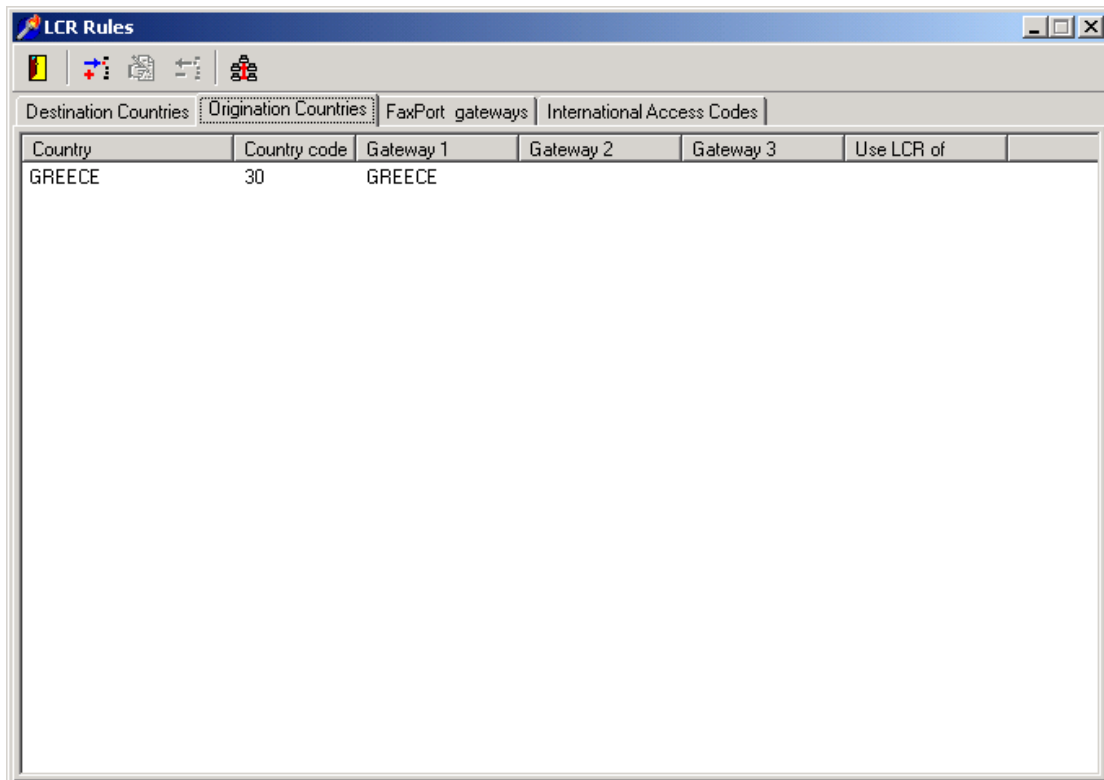
Gateway name	Gateway IP	Gateway type	LCR rules	Last updated
GREECE	10.10.10.106	Terminator	Use LCR rules	
ISRAEL	10.10.10.104	Originator & Terminator	Use LCR rules	

3.2 Configure Origination Countries

- Click on the 'Origination Country' tab.
- **Note:** At this stage, enter only the counties in which there are fax-originating users.
- Click on the 'Add' button , the 'Add Origination Country' window will open.
- Enter the country name (in CAPS), country code and gateway/s through which the locally originated faxes will be sent. (See illustration on next page).




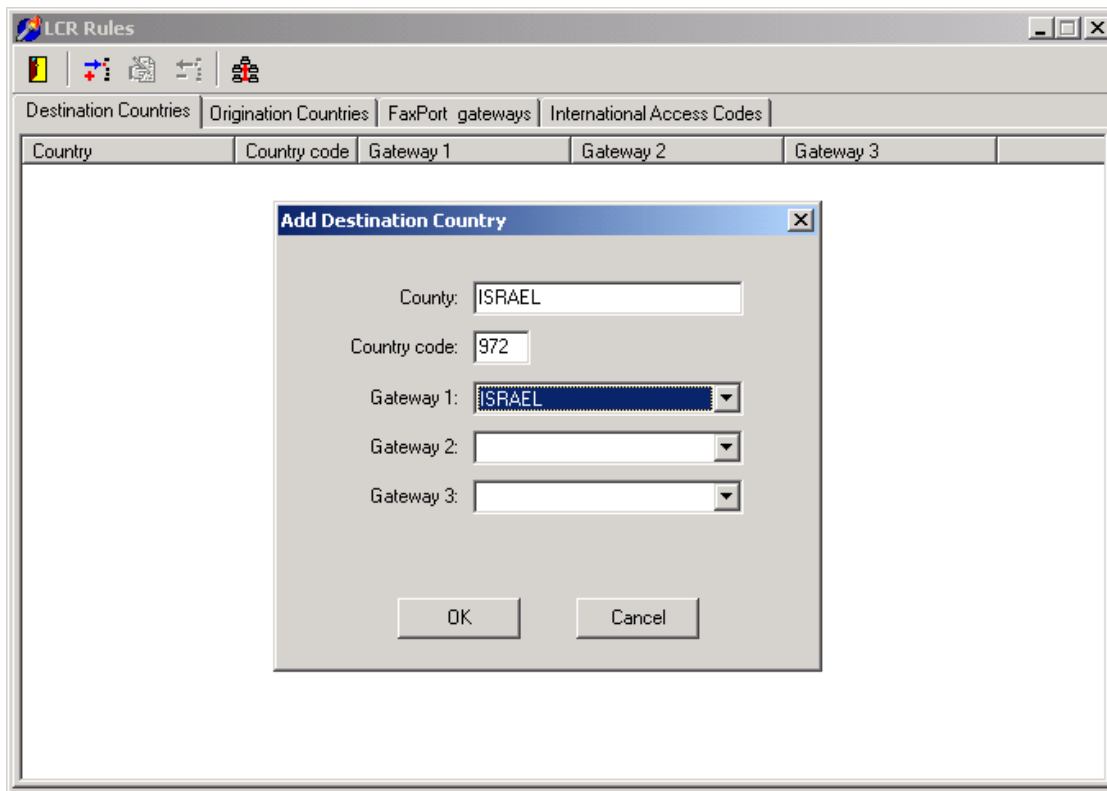
- Once origination countries are added, 'Origination Countries' table should look like so:



3.3 Configure Destination Countries

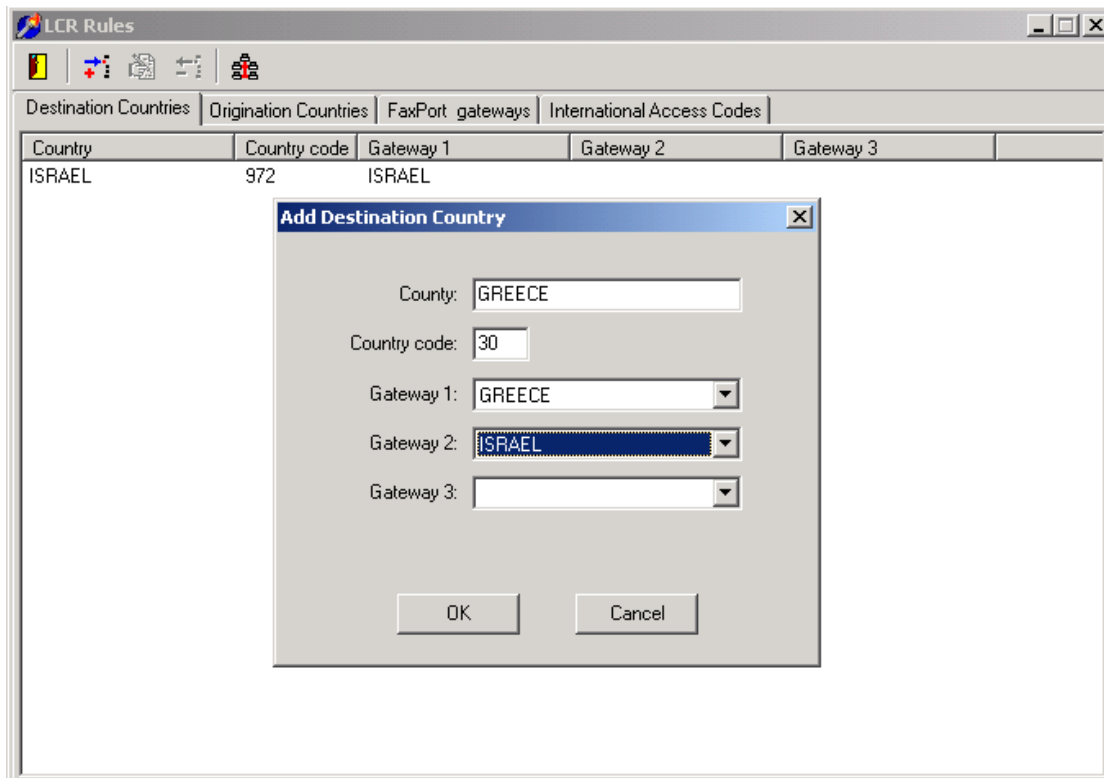
- Click on the 'Destination Country' tab.
- **Note:** At this stage, enter only the counties in which there are fax distribution servers, servers which send the faxes to the recipient machine, their final destination.

- Click on the 'Add' button  , the 'Add Distribution Country' window will open.
- Enter the country name (in CAPS), country code and gateway/s through which the locally originated faxes will be sent.




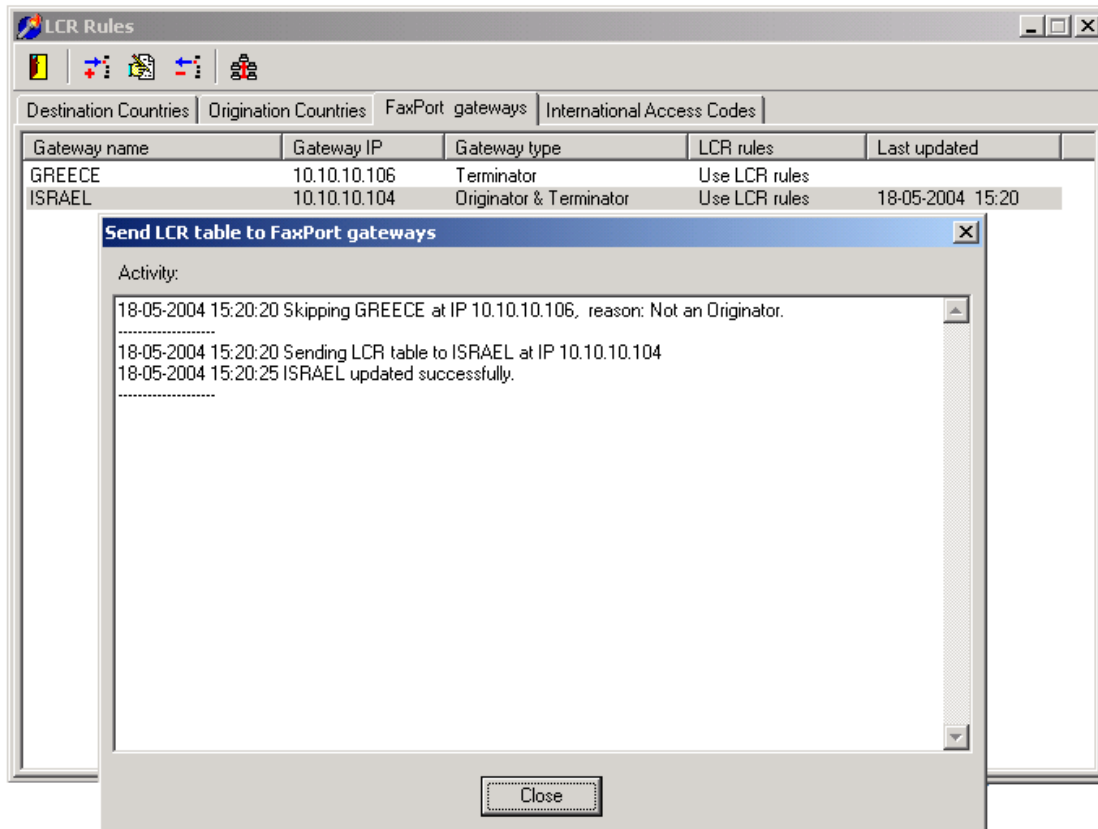
- Go on and enter all other countries in the same manner. (See illustration on next page).

Note: the delete button -  , the edit button -  .




3.4 Distribute All LCR Information

- Click the 'Send LCR table to the FAXport Gateways' button , to update all other configured gateways in the network with recently configured data.



3.5 Final Steps

- Close the application using the 'Exit' button .
- This should end your configuration stage of the FAXport LCR application.