



## **Getting Started Guide**



## **Pre-Requisites**

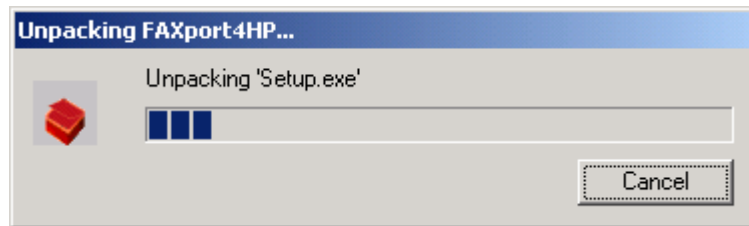
### **Hardware/Software requirements:**

1. Pentium 3, 128 MB RAM, 2 GB free disk space.
2. Network interface card.
3. Windows2000 Server / Professional with service pack 2, Or NT 4 Server / Workstation – service pack 6a or Windows XP service pack 1.
4. Static I.P. address joined to the domain.
5. Microsoft Internet Explorer 5 and above.
6. FAXport client installed and configured.

**\* \* \* FAXport4HP must be installed on the FAXport Server machine \* \* \***

## Installing FAXport4HP

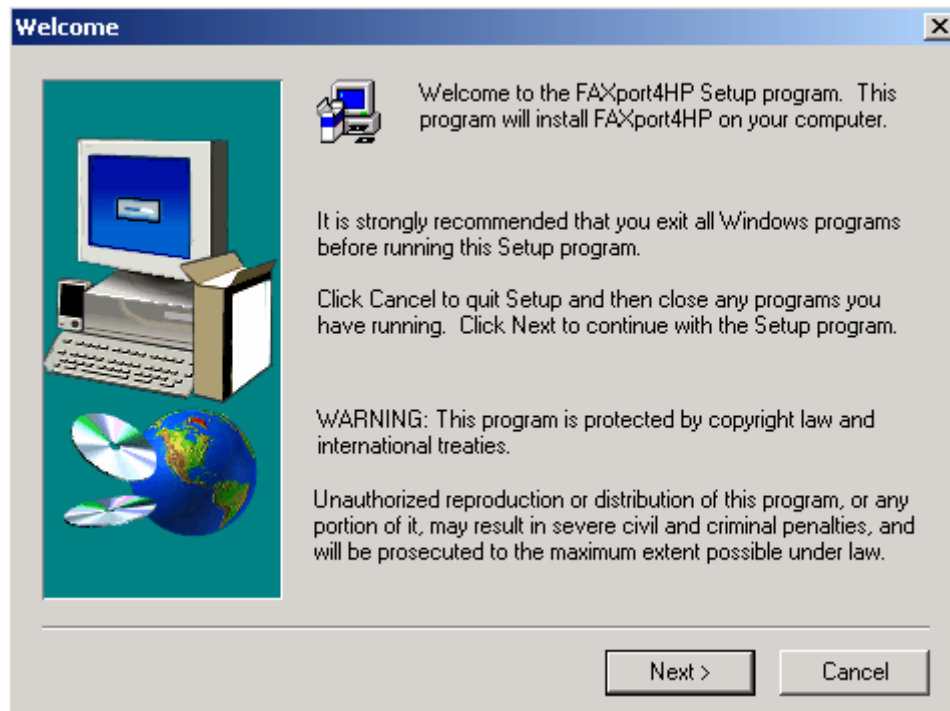
1. Before proceeding with the installation, make sure all running FAXport programs have been exited.
2. To begin the installation, double click on the **FAXport4HP.exe** file (for XP OS and above, use the FAXport4HP\_XP.exe), setup application will be unpacked.



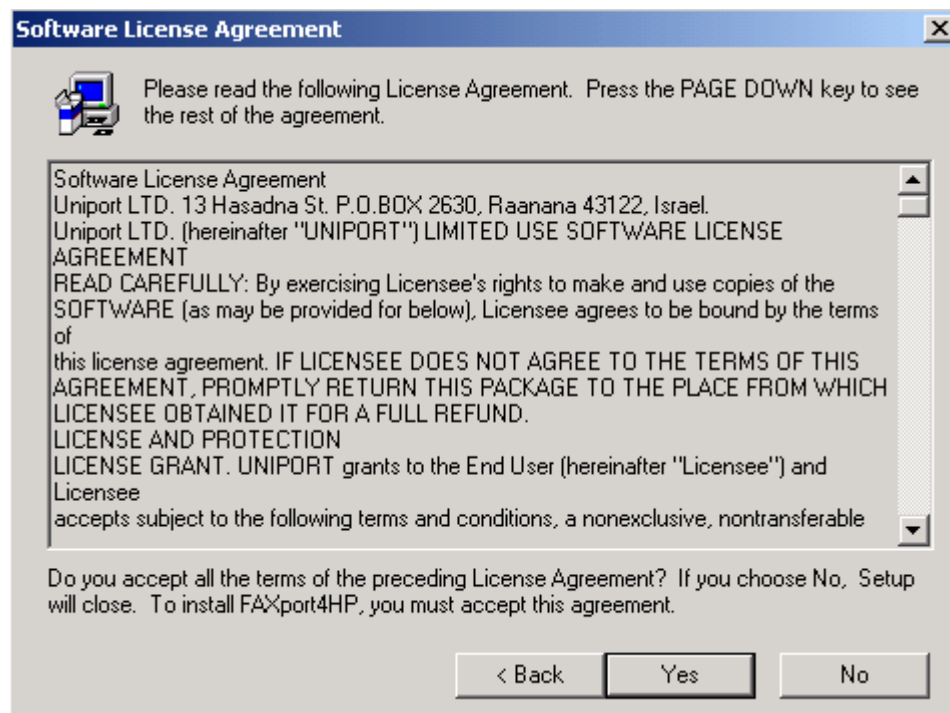
3. FAXport4HP splash screen and setup preparation process will appear.



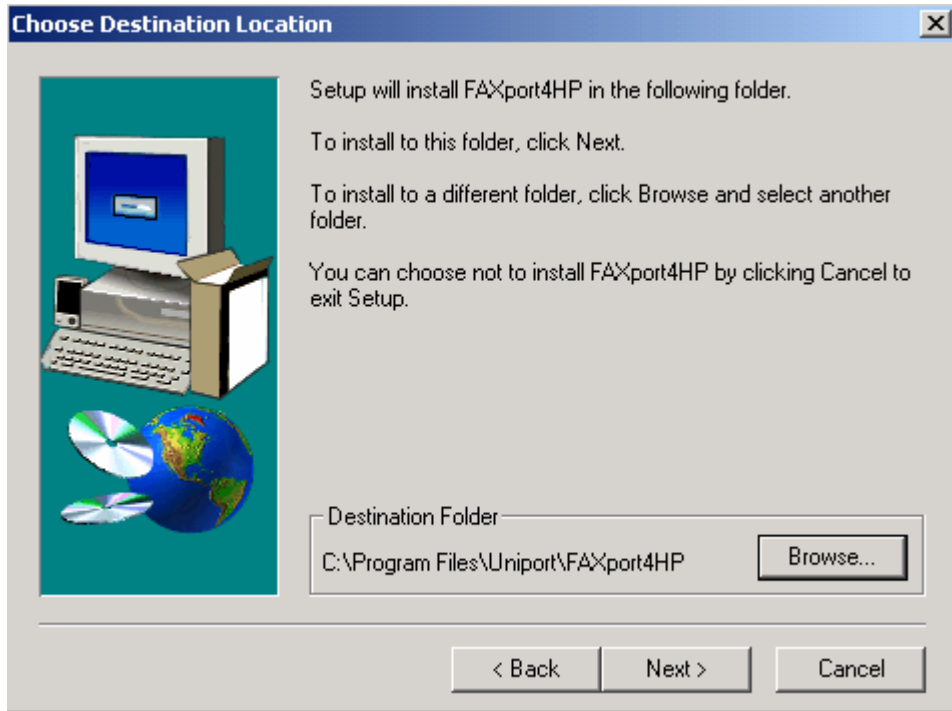
4. Click "Next" in the "Welcome" dialog box.



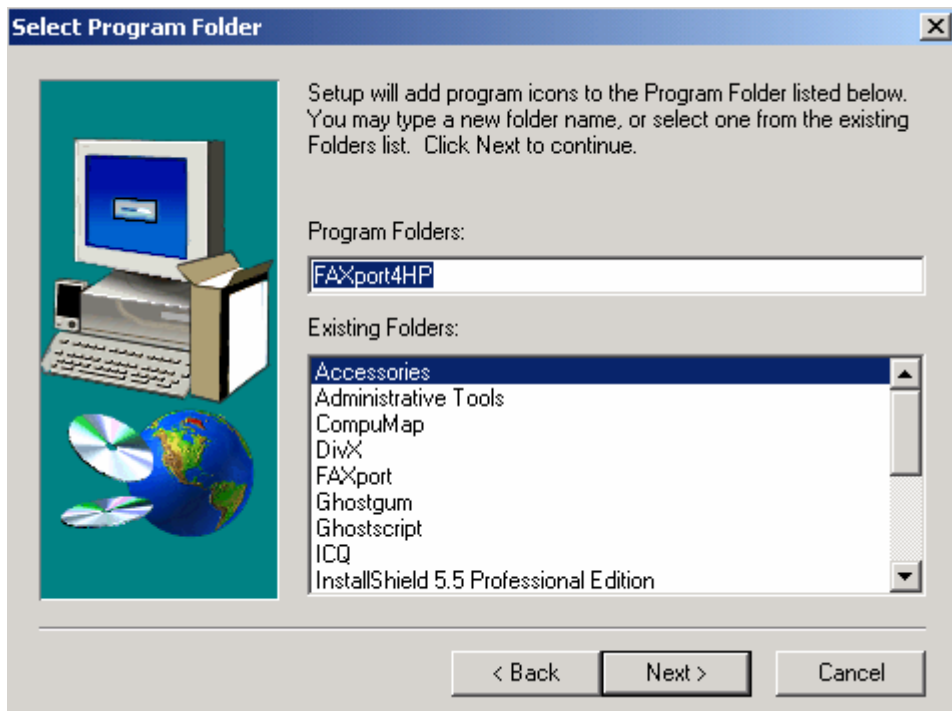
5. Click "Yes" in the "Software License Agreement" dialog box.



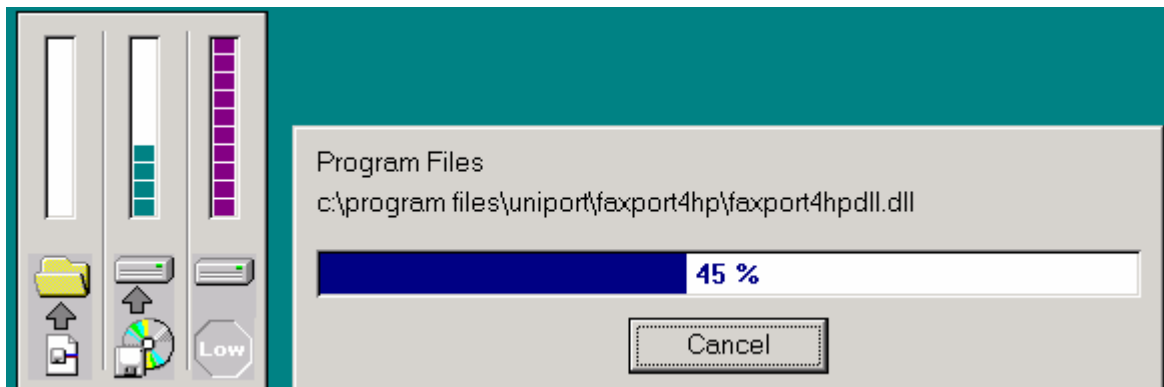
6. Click "Next" in the "Destination Location" dialog box or "Browse" to install the program in a different destination than the default path (C:\Program Files\Uniport\FAXport4HP).



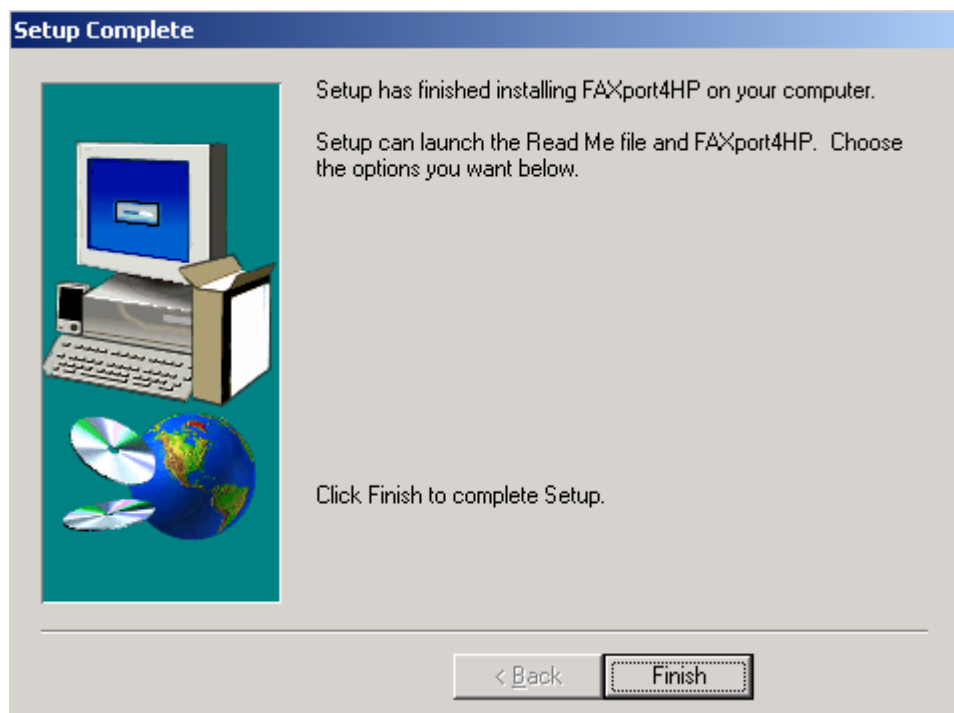
7. Click "Next" in the "Program Folder Location" dialog box.



8. The installation is now in progress, please wait . . .



9. When the "Setup Complete" dialog box appears, the installation has successfully reached the end. Click the "Finish" button to end the installation procedure.



- ! FAXport4HP\_XP.exe uses an XP (and above) built-in component named WIA (Windows Image Acquisition) Automation Layer, further information regarding this component can be found at:

*<http://msdn.microsoft.com/library/default.asp?url=/library/en-us/wiaaut/wia/wiax/overviews/startpagewiaaut.asp>*

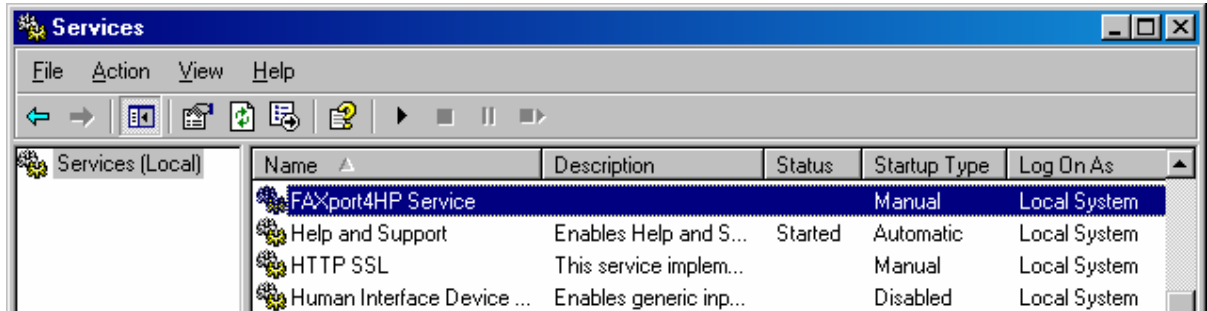
According to Microsoft, "Applications that use the WIA Automation Layer API require Windows XP Service-Pack 1 (SP1) or later. Earlier versions of Windows are not supported". Therefore XP SP1 or later must be installed (in Win2003 it is automatically included). Sometimes, despite proper installation, WIA is not installed. For this reason FAXport4HP setup for XP (and Win2003) automatically copies this dll to the C:\Windows\System32 directory. This however is not enough; due to unknown reasons, registration is sometimes not performed, therefore the dll must be manually registered in the system. To do so, simply click 'Start' > 'Run', type the following command line and pressed 'Enter':

*Regsvr32 C:\Windows\System32\wiaaut.dll*

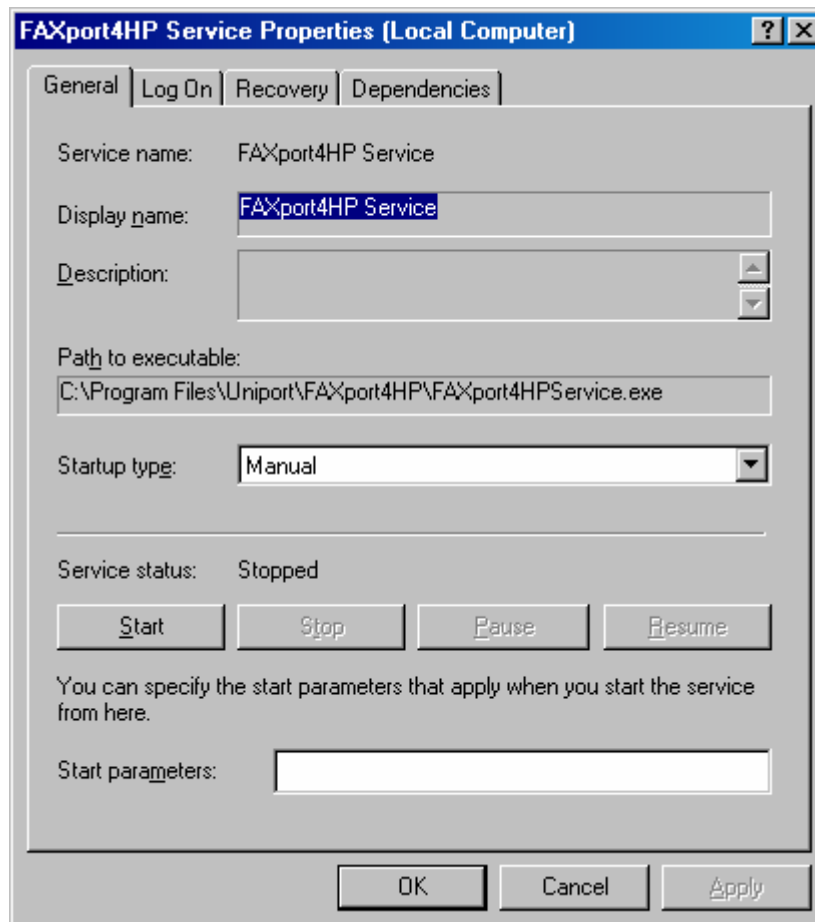
The message confirming successful dll registration should be shown on the screen.

## Configuring the FAXport4HP service

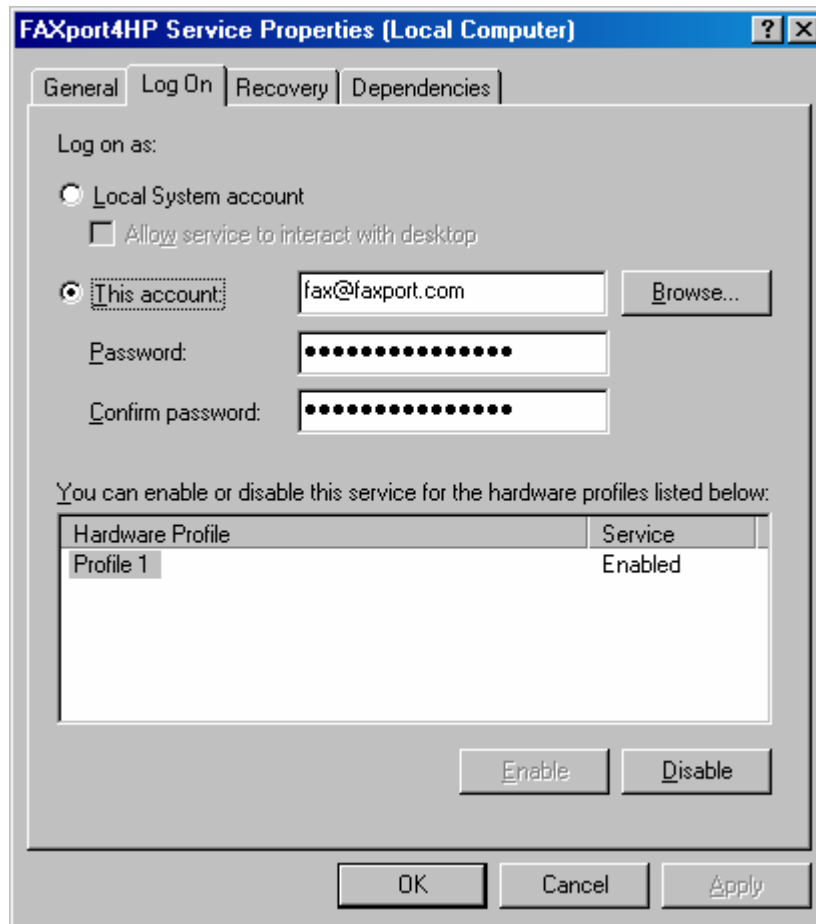
1. The FAXport4HP Service has now been added to 'Services List'.



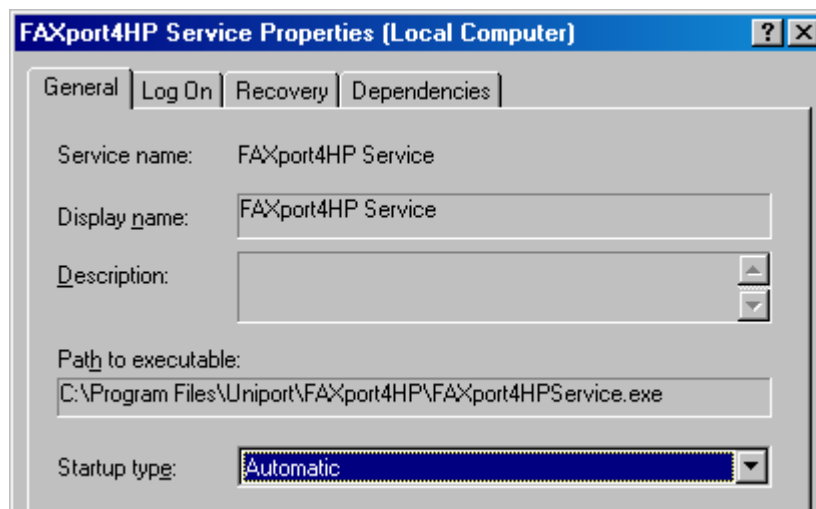
2. Open service properties by entering the "Action" menu and selecting the "Properties" option.



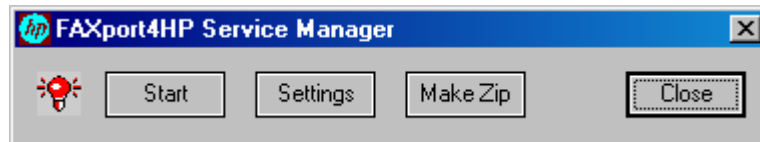
3. Enter the "Log On" tab, select the "This Account" radio-button (not the default "Local System Account") and enter the account user name and password **which were set for the FAXport client of this particular machine.**



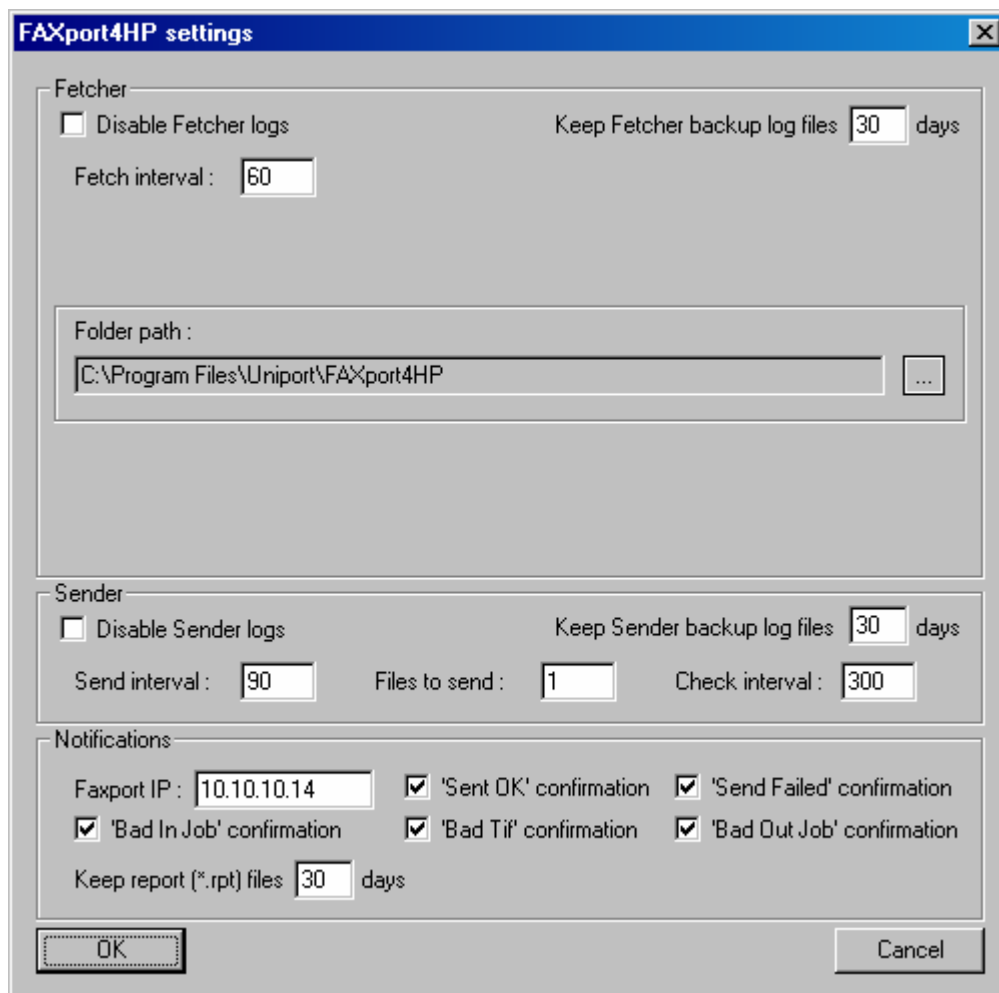
4. Set the FAXport4HP Service to "Automatic" Startup type.



5. Click the "Apply" then the "OK" button to save the changes to the FAXport4HP service properties.
6. Go to **Start** -> **Programs** -> **FAXport** -> **FAXport4HP** and run the "FAXport4HP Manager" (this can also be done by entering the FAXport4HP directory, installed by default under C:\Program Files\Uniport\FAXport4HP, and activating the FAXport4HPManager.exe). The following screen will appear:



7. Press the "Settings" button. The following screen will appear:



8. The FAXport4HP Settings interface contains three sections: **Fetcher**, **Sender** and **Notification**.

## 9. Fetcher:

Fetcher

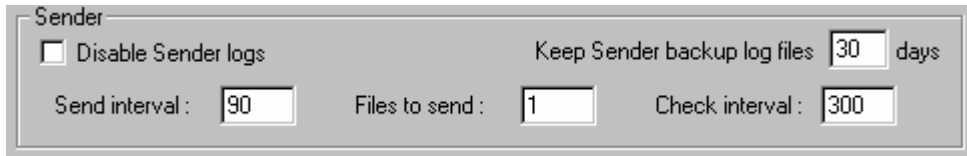
Disable Fetcher logs      Keep Fetcher backup log files  days

Fetch interval :

Folder path :  
 ...

- a. Disable Fetcher Log: When checked, this option will disable the writing of the Fetcher log, which otherwise will be written to the FAXport4HP root directory (default path: C:\Program Files\Uniport\FAXport4HP).
- b. Keep Fetcher Backup Log Files (in days): Is the number of days the Fetcher backup log files will be saved. The recommended parameter is: 30, the default parameter is 30.  
**Note** – Once the Fetcher log reaches 1M, it is automatically archived as a backup file in the root directory of FAXport4HP (default path: C:\Program Files\Uniport\FAXport4HP), according to the following naming system: Fetcher\_YYYYMMDD\_HHMMSS.bak. These backup log files are then saved according to the above mentioned interval, once “keeping” time is up, the backup log files are deleted.
- c. Fetch Interval (in seconds): Is the timeout interval between folder scans preformed by the FAXport4HP Fetcher module in an attempt to locate and process new fax jobs. The recommended parameters are: 30, 40, 60, the default parameter is 60.
- d. Folder Path: Is the destination of the folder containing new fax jobs which were scanned by HP machines and are waiting to be fetched by the FAXport4HP fetcher.

## 10. Sender:



Sender

Disable Sender logs      Keep Sender backup log files  days

Send interval :       Files to send :       Check interval :

- a. Disable Sender Log: When checked, this option will disable the writing of the Sender log, which otherwise will be written to the FAXport4HP root directory (default path: C:\Program Files\Uniport\FAXport4HP).
- e. Keep Sender Backup Log Files (in days): Is the number of days the Sender backup log files will be saved. The recommended parameter is: 30, the default parameter is 30.  
**Note** – Once the Sender log reaches 1M, it is automatically archived as a backup file in the root directory of FAXport4HP (default path: C:\Program Files\Uniport\FAXport4HP), according to the following naming system: Sender\_YYYYMMDD\_HHMMSS.bak. These backup log files are then saved according to the above mentioned interval, once “keeping” time is up, the backup log files are deleted.
- b. Send Interval (in seconds): Is the timeout interval between submitting of prepared fax jobs by the sender module to the FAXport Communication Server. The recommended parameters are: 60, 90, 120, the default parameter is 90.
- c. Files to Send (1-9): The number of prepared fax jobs to be submitted concurrently to the FAXport Communication Server by the sender module. The recommended parameter is: 1, the default parameter is 1.
- d. Check Interval (in seconds): Is the sender module timeout between 'final-status' retrieval attempts from the FAXport Communication Server. The recommended parameters are: 120, 300, 600, the default parameter is 300.

## 11. Notification

Notifications

Faxport IP :   'Sent OK' confirmation  'Send Failed' confirmation

'Bad In Job' confirmation  'Bad Tif' confirmation  'Bad Out Job' confirmation

Keep report (\*.rpt) files  days

- a. FAXport IP: The IP address of the FAXport server (should be the same machine FAXport4HP is being installed on). If this field is left empty, the notification will be printed to the default printer defined on this machine.

**Note** – All HP machines which are expected to interact with FAXport4HP, must be installed on this computer as local printers, their names will be determined according to the following format:

\\<IP of FAXport server>\IP\_<IP of copy machine>

This printer installation format is necessary in order to enable printed notifications back to the submitting machine.

- b. Confirmation Categories: When checked, the various categories will invoke a confirmation, printed to the submitting machine, once a final status for the fax job is obtained.
- c. Keep Report Files (in days): Is the number of days the report files, which hold the fax job's final status, will be saved. These files are saved under: C:\Program Files\Uniport\FAXport4HP\Report, and will automatically be deleted once "keeping" time is up. The recommended parameter is: 30, the default parameter is 30.

12. Once all parameters have been properly configured, click on the "OK" button to save setting changes. This will again invoke the FAXport4HP Service Manager.

13. To commence FAXport4HP operation, the FAXport server must be started in order to enable fax dispatching. Please start the FAXport server now.
14. You are now ready to begin using FAXport4HP. Press the "Start" button in the "Service Manager" and wait until the light bulb turns yellow.



**FAXport4HP is now running.**

15. To stop the FAXport4HP service, simply click on the "Stop" button of the "Service Manager" or stop the service via "Services" (Administrative Tools) "Action" menu.
16. The "Make Zip" option of the "FAXport4HP Service Manager", enables zipping up relevant logs for a simple delivery to the support team, in case problems arise.